

QDDC-33-55-K2-50

33~55MHz, 200W, 50dB

Features:

* Low Insertion Loss

Applications:

* Amplifiers
* Transmitter
* Laboratory Test
* Radar

Electrical

Frequency:	33~55MHz
Insertion Loss:	0.4dB max.
Coupling:	50±1dB
Directivity:	20dB min.
VSWR (Mainline):	1.2 max.
VSWR (Coupling):	1.5 max.
Average Power:	200W
Peak Power:	500W

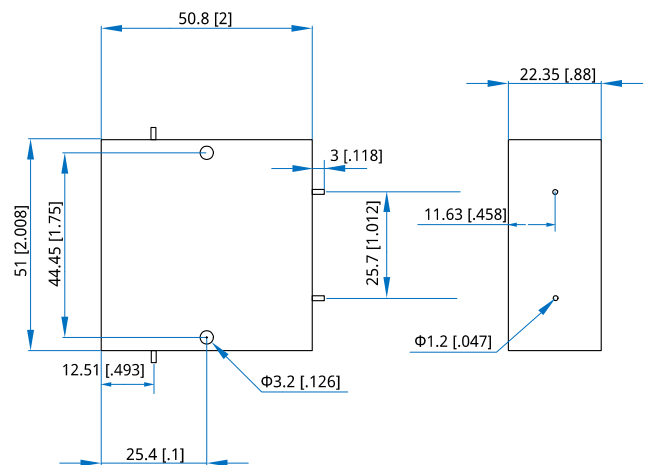
Mechanical

Size* ¹ :	50.8*51*22.35mm 2*2.008*0.88in
Mounting:	2-Φ3.2mm through-hole

[1] Exclude connectors

Environmental

Operating Temperature:	-45~+100°C
Non-operating Temperature:	-55~+100°C

Outline Drawings


Unit: mm [in]

Tolerance: ±0.3mm [±0.012in]

How To Order

QDDC-33-55-K2-50

Customization is available upon request.